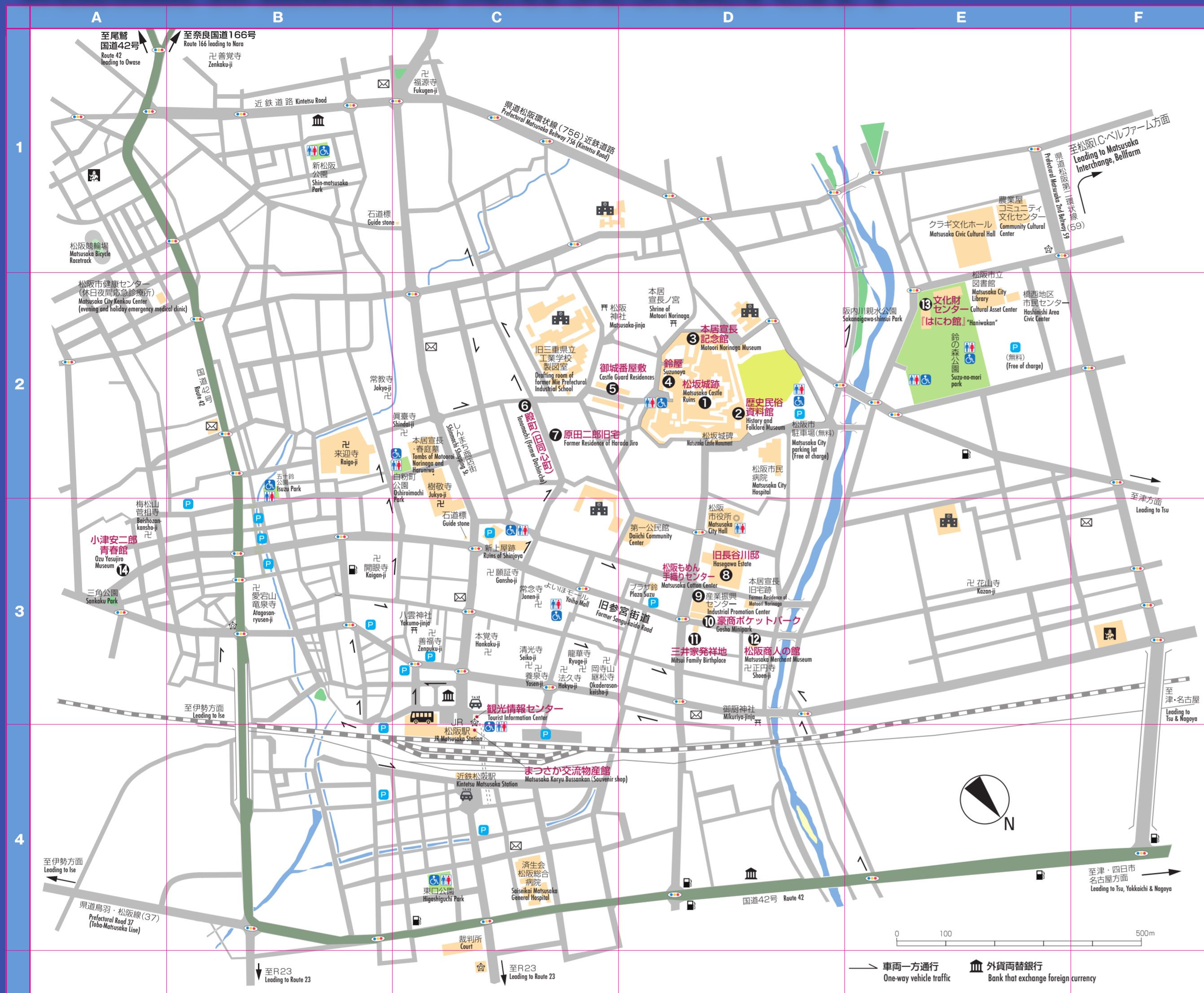
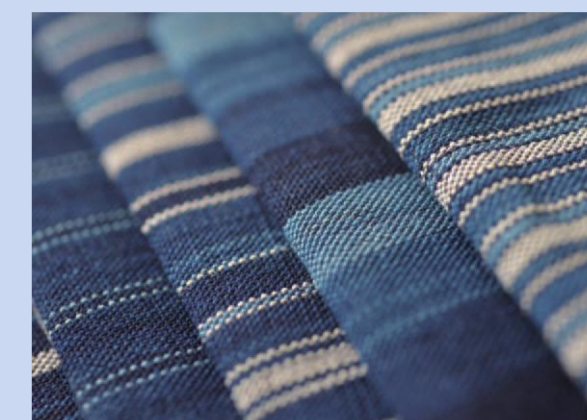


Welcome to historical MATSUSAKA CITY



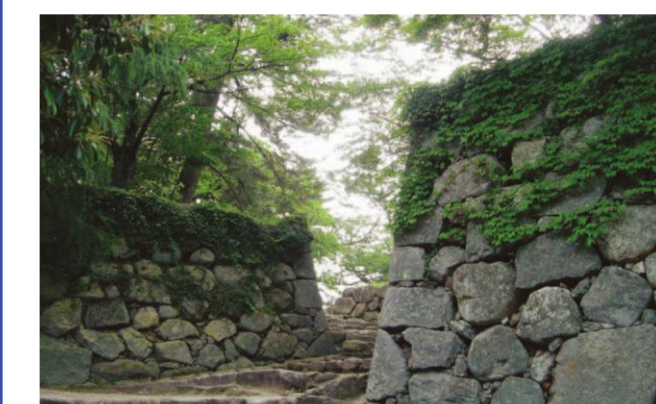
松阪牛 Matsusaka Beef
The process of creating Matsusaka beef starts with selecting 7 to 8 month-old high pedigree calves. From there, these calves are given the best care for the next 3 years. They are fed beer to stimulate their appetites and massaged so the fat will be distributed evenly from the improving their blood flow. The Matsusaka Cattle Competition is held every year at the end of November. In 2002, the first prize winner was auctioned off for 50 million yen - a new record. Matsusaka beef is known for its tender and finely marbled texture that can be cut even with chopsticks. Its taste is highly praised around the world as a work of art in meat.

松阪茶 Matsusaka Tea
Mie's tea production ranks third in Japan for the amount of land used and quantity produced. Matsusaka is home to Fukamushi Sencha. The mild climate, rich soil and morning mists from the Kushida River help create the perfect environment to grow this wonderfully fragrant local tea. You can enjoy this delicious tea while learning the proper drinking etiquette.



松阪木綿 Matsusaka Cotton
Matsusaka cotton - with its beautiful indigo blue and striped pattern - was first sold and popularized by Matsusaka merchants in Edo (Now Tokyo). You can rent a Matsusaka cotton kimono and walk around town with it or try your hand at weaving it.

Introduction of Matsusaka's spots



1 松坂城跡 Matsusaka Castle Ruins

Matsusaka Castle was built by Gamo Ujisato in 1588. The stone walls are all that remain of the castle after a powerful typhoon destroyed the castle tower. The site is well known among local residents as a great place to relax and enjoy the scenery. Visitors can look forward to plums, cherry and wisteria blossoming in early and mid spring and ginkgo in the fall. It was selected as one of the top 100 Castles in Japan in 2006 and designated a national historical monument in 2011.
Open everyday



2 松坂市立歴史民俗資料館 Matsusaka City History and Folklore Museum

0598-23-2381
This historical building was originally built to serve as a library in 1911. There are exhibits that introduce the culture and history of Matsusaka and its famous products such as Matsusaka Cotton and Ise Oshiroi Face Powder.
Hours: 9:00-16:30 (Apr.-Sept.), 9:00-16:00 (Oct.-Mar.)
Closed: Monday (Tuesday when Monday is a public holiday), the day after a public holiday and New Year's Break
Temporary closures during exhibit updates



3 本居宣長記念館 Motoori Norinaga Museum

0598-21-0312
Motoori Norinaga (1730-1801) was an Edo period researcher of classic Japanese literature such as 'Kojiki' and 'Tale of Genji'. The museum features original manuscripts, self-portraits and his personal bell collection.
Hours: 9:00-16:30
Closed: Monday (Tuesday when Monday is a public holiday) and New Year's Break



4 鈴屋 Suzunoya

0598-21-0312
Suzunoya is the name of the second floor study of Motoori Norinaga's residence. The house was restored to its original condition after being moved here. The second floor unfortunately is off-limits. However, you can see into it from a designated spot on the castle walls.
Closed: Monday (Tuesday when Monday is a public holiday) and New Year's Break
Hours: 10:00-16:00



5 御城番屋敷 Castle Guard Residences

0598-26-5174
These residences were home to the Kishi domain samurai warriors that guarded Matsusaka Castle at the end of the Edo period. People still live in them to this day which is rare in Japan. As one of the largest samurai residential complexes in Japan, it has been designated as an Important Cultural Property. The northern residence located on west side is free to visit.
Closed: Monday (Tuesday when Monday is a public holiday) and New Year's Break
Hours: 9:00-16:30



6 殿町(旧同心町) Former Residence (Former Doshin-cho)

The pride of Matsusaka, this group of warrior houses provides the neighborhood with a unique historical vibe. About 60 Doshin and Torimi (government officials in the Tokugawa Shogunate) of the Kishi domain lived in the housing here. Lovely hedges run along the road through Doshin-cho, which contains ten late Edo period (1603-1868) buildings.
Open everyday



7 原田二郎旧宅 Former Residence of Harada Jiro

0598-23-1656
Harada Jiro (1849-1930) was an entrepreneur active from the Meiji through to the Taisho period. He used all of his personal assets to establish a public welfare foundation. His home is located in the middle of town, a historic area where samurai residences once stood side by side. The residence exemplifies the architecture style used commonly for samurai homes in the Edo period.
Hours: 10:00-16:00
Closed: Monday (Tuesday when Monday is a public holiday), the day after a public holiday and New Year's Break



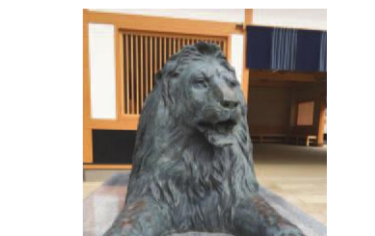
8 旧長谷川邸 Hasegawa Estate

0598-53-4393
The Hasegawa Family made its fortune as cotton merchants in Edo (now Tokyo). The estate features historic architectural features such as wooden lattices, five stoneshouses and a roof supported by a distinctive udstaba beam—one of only three remaining in Mie Prefecture. Centered around a pond and full of beautiful greenery, the estate's garden is a pleasure to visit in all seasons. Items on display include books preserved by the family over the years and a recently discovered collection of golden coins. It was designated as an Important Cultural Property in July 2016.
Hours: 10:00-16:00 Interior open every Saturday, Sunday and on public holidays (Closed: New Year's Break)



9 松阪もめん手織りセンター Matsusaka Cotton Center

0598-26-6355
This center works to produce and pass on knowledge about traditional Matsusaka Cotton. Available for purchase are fabrics, kimonos and accessories designed with the traditional indigo blue striped pattern. One of the most popular exhibits is the authentic Edo Period loom that can be used to make original clothing.
Hours: 9:00-17:00
Closed: Tuesday (Wednesday when Tuesday is a public holiday) and New Year's Break



10 豪商ポケットパーク Goshu Minipark

The Lion Statue, a symbol of the Mitsukoshi Department Store, was presented to Matsusaka City. This statue was modeled on the statue of the lion in London's Trafalgar Square. It is said one's wish will be granted by sitting on the statue's back.
Open everyday



11 三井家発祥地 Mitsui Family Birthplace

Mitsui Takatoshi (1622-1694), the great merchant who established the foundation for the Mitsui zaibatsu conglomerate, was born in the city of Matsusaka. Although this site is not open to the public, it contains designated memorial to the birthplace of the family and the well which was used to give Takatoshi his first bath as an infant.
Interior not open to the public



12 松阪商人の館 Matsusaka Merchant Museum

0598-21-4331
The museum used to be the former residence of the great paper wholesaler Ozu Seizaemon - one of the Ozu Yasujiro Museum. The museum is located in the historic Kanebo Textile Plant and Warehouse built in 1923. The warehouse is a Registered Tangible Cultural Property and is used by many local artists.
Hours: 9:00-17:00 (Jan-Mar), 9:00-16:00 (Apr.-Mar.)
Closed: Monday (Tuesday when Monday is a public holiday), the day after a national holiday and New Year's Break



13 松坂市文化財センター「はにわ館」 Matsusaka City Cultural Asset Center 'Haniwakan'

0598-26-7330
The ancient terracotta boat on permanent display is the largest in Japan and the only one with three-dimensional features. It was excavated from Matsusaka's ancient Takarazuka burial mound and has been designated an Important Cultural Property. The gallery is located in the historic Kanebo Textile Plant and Warehouse built in 1923. The warehouse is a Registered Tangible Cultural Property and is used by many local artists.
Hours: 10:00-16:00 (Nov.-Mar.), 11:00-16:00 (Apr.-Oct.)
Closed: Monday (Tuesday when Monday is a public holiday), the day after a national holiday and New Year's Break



14 小津安二郎青春館 Ozu Yasujiro Museum

0598-22-2660
Did you know that renowned film director Ozu Yasujiro (1903-1963) moved to Matsusaka when he was 9 and lived there until he turned 19? Today, part of his childhood house has been converted into the Ozu Yasujiro Museum. Visitors can see his journal and childhood letters.
Hours: 10:00-16:00 (Nov.-Mar.), 11:00-17:00 (Apr.-Oct.)
Closed: Tuesday, Wednesday, Thursday and New Year's Break

松坂市観光情報センター Matsusaka City Tourist Information Center
507-2 Kyomachi, Matsusaka City, Mie Prefecture 515-0017 Japan
(Hours) 9:00-18:00 (Closed) New Year's Break (Phone) 0598-23-7771 (Fax) 0598-26-4778
E-mail info@matsusaka-kanko.com
<http://www.matsusaka-kanko.com/language/en/index/>
Please feel free to make contact the Matsusaka City Tourist Information Center with questions or comments about tourism in Matsusaka.

baggage room free spot WiFi rental wheelchair rental bicycle rental car

まつさか交流物産館 Matsusaka Koryu Bussankan (Souvenir Shop)
It is located near from JR Matsusaka Station, we have many Matsusaka souvenirs such as Matsusaka beef, Matsusaka cotton and sweets.
Hours: 9:00 - 18:00
Closed: New Year's Break

Matsusaka Station Area Map

Inquiries about Transportation

Public Transportation Facilities
JR Central Telephone Center ☎050-3772-3910
Kintetsu Nagoya Telephone Center ☎052-561-1604
Mie Kotsu Head Office ☎059-229-5533

Taxi
Meitetsu Taxi ☎0598-51-2277
Kintetsu Taxi ☎0598-21-5543
Kaneshichi Taxi ☎0598-59-0301
Ureshino Taxi ☎0120-701-257
Hisai Kotsu ☎0598-42-5320

Rental Car
Nippon Rent-A-Car ☎0598-52-0577
Toyota Rental & Leasing ☎0598-50-1100
ORIX Rent-A-Car ☎0598-50-3543

[As of April 1, 2017]